

# DULUTH INTERNATIONAL AIRPORT

DULUTH, MN



\$12,200,000



## PROJECT DETAILS



### Architectural Metal

- Architectural Metal Roofing and Siding
- 18,000 square feet of metal for the wall panel system
- 16,500 square feet of Centria Graphix Panels
- 3.4 miles (18,000 lin. ft.) of standing seam roof panels
- Each panel of “The Wave” roof is 265’ long, which were installed over a barrel curved roof structure
- 8,400 sq. ft. of curved aluminum composite soffit panels

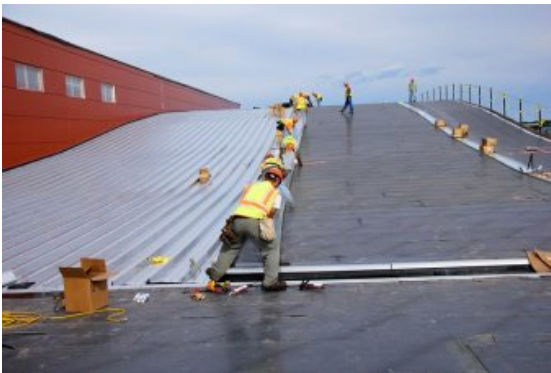
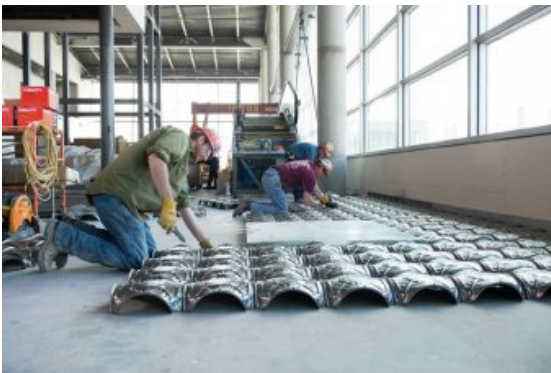


### Arrowhead/Jamar Service

- Maintenance Agreement
- Preventive Maintenance
- HVAC-R

### Plumbing & HVAC

- Complete Coordination, Fabrication and Installation for Plumbing, Piping, HVAC and Geo Thermo
- 100,000 pounds of duct work
- Four miles of piping for domestic water, plumbing, gas, heating, cooling and refrigeration
- 7.5 mi. of piping in sidewalks for the snow melt systems
- 32,000 square feet of Air Floor air distribution panels
- 47 air handlers and heating/cooling units
- Four Level parking garage. Lower two levels enclosed.
- The project includes heating, ventilation with heating/cooling of a new skywalk from the new parking garage to the recently completed Airport Terminal building



### Roofing

- Install vapor barrier, thermal insulation and .090 mil EPDM roofing system
- Created custom painted and fabricated .050 Aluminum sheet metal flashings and coping caps



PROJECT EXPERIENCE | THE JAMAR COMPANY